

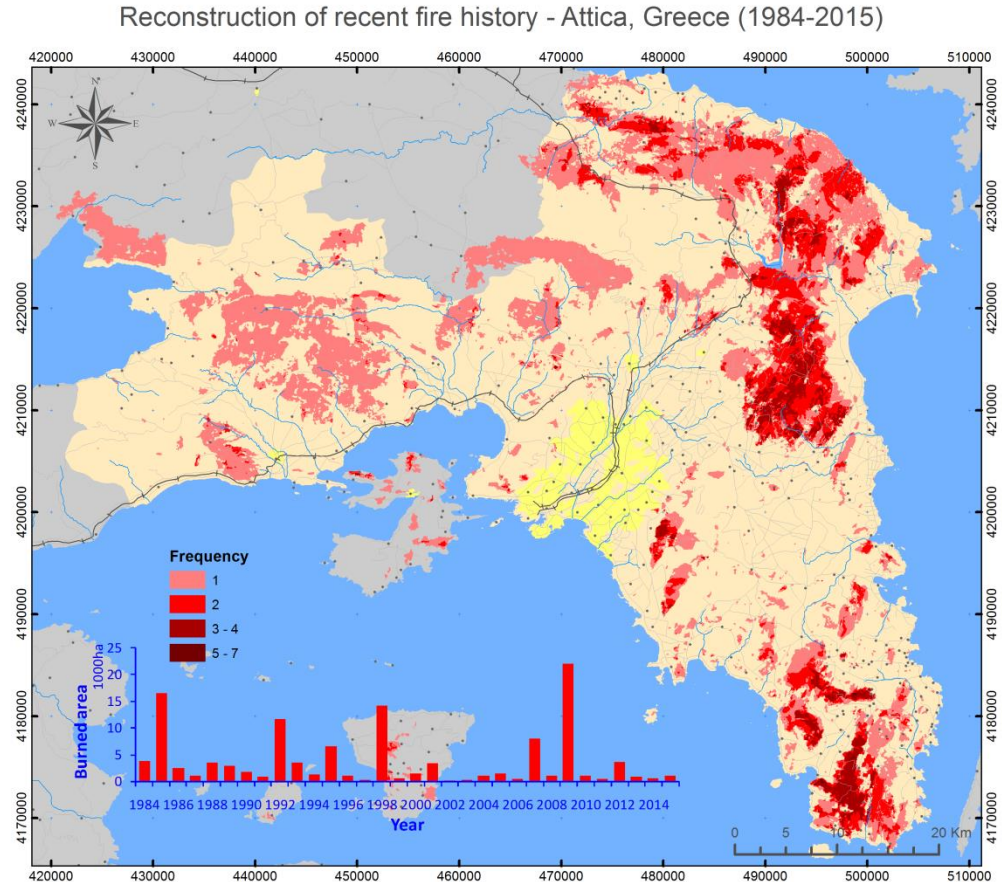
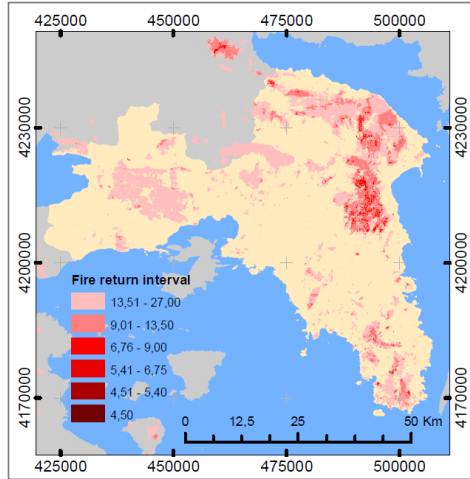
12TH EARSEL FOREST FIRES SIG
WORKSHOP
3-5 OCTOBER 2019, ROME , ITALY

A rule-based semi-automatic method to map burned areas
using Landsat and Sentinel-2 images – revisited and improved

Nikos Koutsias and Magdalini Pleniou

University of Patras, Department of Environmental Engineering, Greece

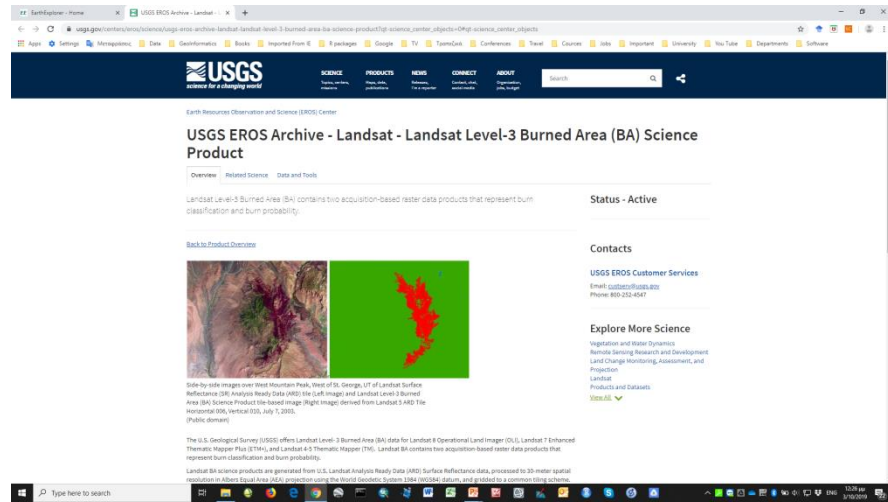
Maps of burned areas are important for various reasons

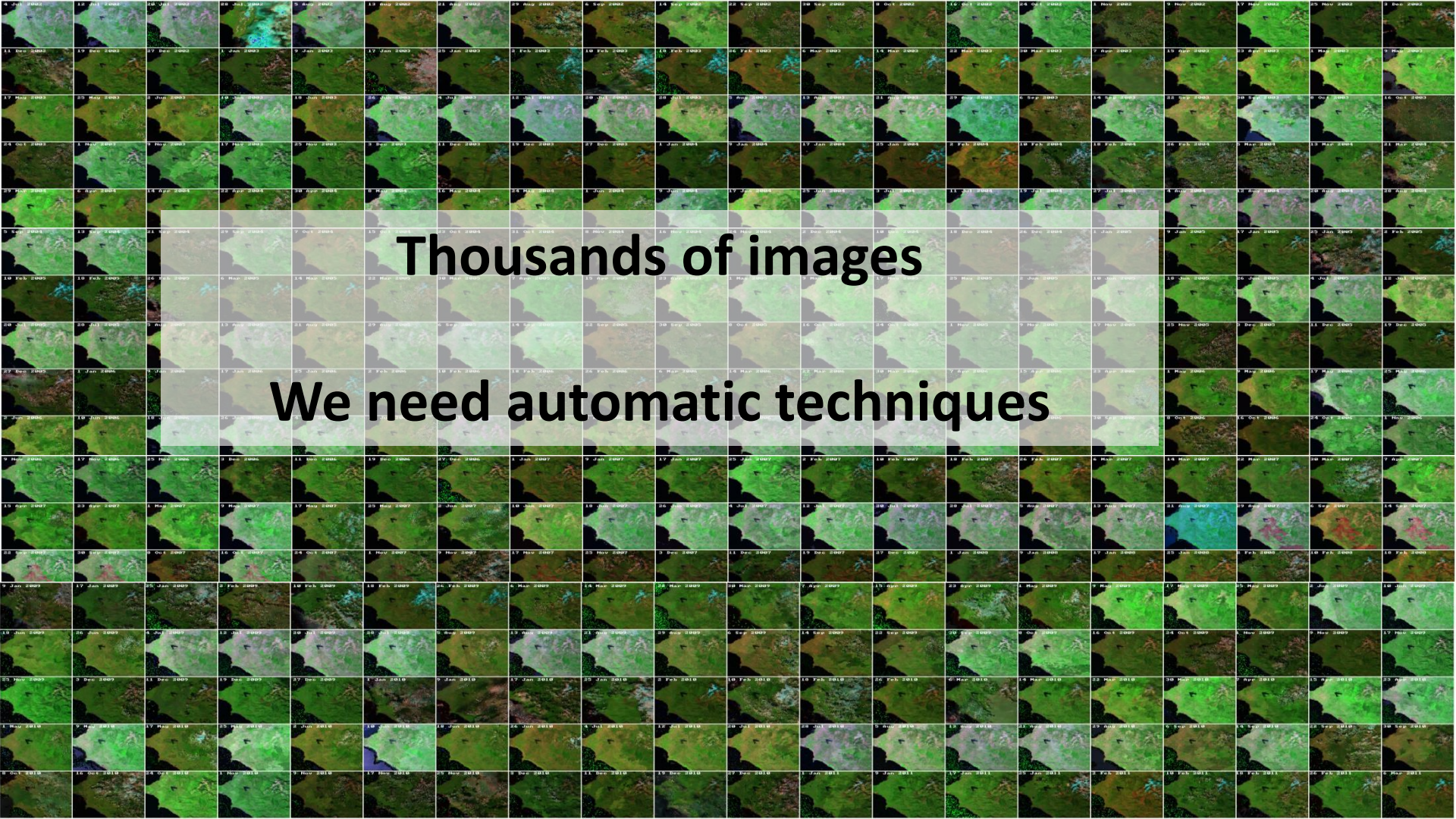


There are various products of burned areas but most are at global scale



However, recently USGS started providing the Landsat Level-3 Burned Area (BA) Science Product but only for US





Thousands of images

We need automatic techniques

A rule-based semi-automatic method to map burned areas: exploring the USGS historical Landsat archives to reconstruct recent fire history

Nikos Koutsias^{a*}, Magdalini Pleniou^a, Giorgos Mallinis^b, Foula Nioti^a,
and Nikolas I. Sifakis^{c,d}

^a*Department of Environmental and Natural Resources Management, University of Ioannina, GR-30100 Agrinio, Greece;* ^b*Department of Forestry & Management of the Environment and Natural Resources, Democritus University of Thrace, GR-68200 Orestiada, Greece;* ^c*Institute for Space Applications and Remote Sensing, National Observatory of Athens, GR-15236 Pendeli, Greece;* ^d*European Research Council Research Agency, Brussels, Belgium*

(Received 13 June 2012; accepted 3 March 2013)

Rule	Arithmetic expression	Description
uni-temporal rules	1 st rule <i>If Landsat TM4 post < Landsat TM5 post then 1 (burned) otherwise 0 (unburned)</i>	The reflectance of burned areas in the near-infrared band (e.g. TM4 in Landsat-5 or -7) is less than that in short-wave infrared band (e.g. TM5 in Landsat-5 or -7). However, for many other land-cover types (mainly the vegetated ones), their reflectance in near infrared band is higher than that in short-wave infrared band. Therefore, this rule differentiates burned areas with special emphasis on vegetated areas.
		The reflectance of burned areas in the short-wave infrared band (e.g. TM7 in Landsat-5 or -7) plus an additional threshold value (a in 0.10-0.25) is slightly higher than that in short-wave infrared band (e.g. TM5 in Landsat-5 or -7), while for other land cover types their reflectance in short-wave infrared band (e.g. TM7 in Landsat-5 or -7) is lower than in short-wave infrared band (e.g. TM5 in Landsat-5 or -7). Therefore, this rule differentiates burned areas with special emphasis on various land cover types and more specifically to vegetated areas.
		The reflectance of sea water in the red band (e.g. TM3 in Landsat-5 or -7) is less than that in blue band (e.g. TM1 in Landsat-5 or -7), while for many other land cover types including the burned areas, their reflectance in red is higher than in blue. Therefore, this rule differentiates burned areas with special emphasis on water bodies.
multi-temporal rules	2 nd rule <i>If Landsat TM3 post > Landsat TM1 post then 1 (burned) otherwise 0 (unburned)</i>	The reflectance of burned areas in the near infrared band (e.g. TM4 in Landsat-5 or -7) in the post-fire image is lower than that of the pre-fire image. An additional threshold value should be defined (a in 0.10-0.25), otherwise features having even a 1 DN value difference between the pre- and post-fire image are captured as changed.
		The reflectance of burned areas in the mid infrared band (e.g. TM7 in Landsat-5 or -7) in the post-fire image is higher compared to the pre-fire image. An additional threshold value should be defined (a in 0.10-0.25), otherwise features having even a 1 DN value difference between the pre- and post-fire image are captured as changed.
multi-temporal rules	3 rd rule <i>If TM4 post + a TM4 post < TM4 pre then 1 (burned) otherwise 0 (unburned)</i>	
multi-temporal rules	4 th rule <i>If TM7 post > TM7 pre + a TM7 pre then 1 (burned) otherwise 0 (unburned)</i>	
multi-temporal rules	5 th rule	

Only post-fire image

1st rule

TM4 post<TM5 post

2nd rule

TM5 post<TM7 post+threshold

3rd rule

TM3 post>TM1 post


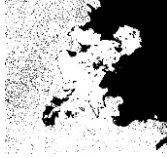

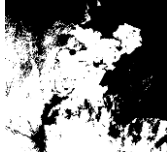

Pre- and post-fire image

4th rule

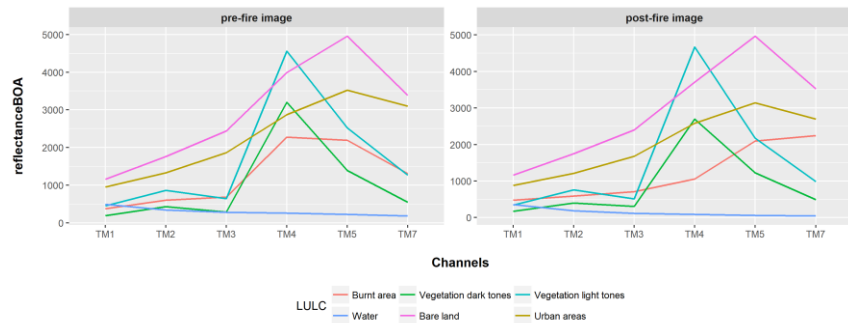
TM4 post+threshold<TM4 pre

5th rule

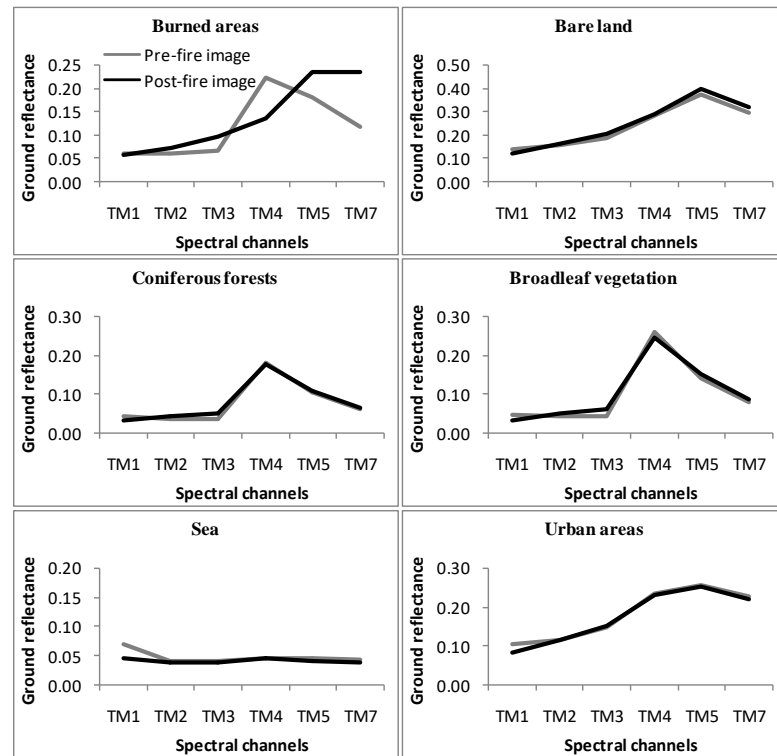
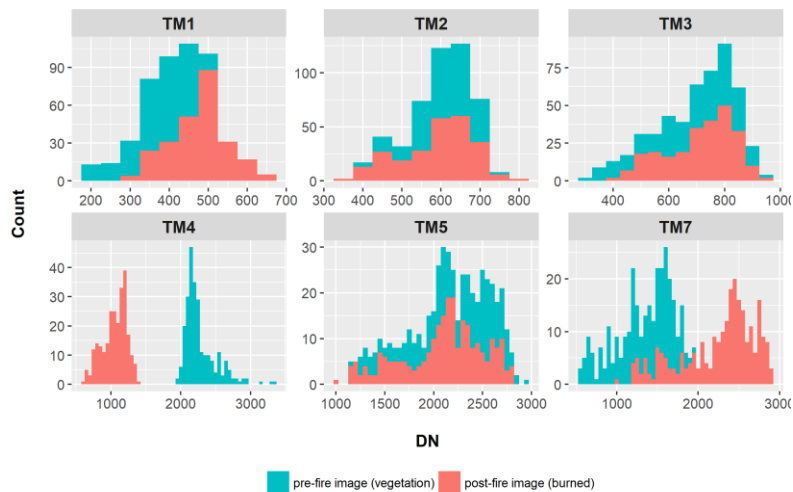
TM7 post>TM7 pre+threshold

Rule	Old set of rules	
e	Expression	Application
uni-temporal rules	1 st rule <i>If Landsat TM4 post < Landsat TM5 post then 1 (burned) otherwise 0 (unburned)</i>	
	2 nd rule <i>If Landsat TM5 post < Landsat TM7 post + a Landsat TM7 post then 1 (burned) otherwise 0 (unburned) a=0.10-0.25</i>	
	3 rd rule <i>If Landsat TM3 post > Landsat TM1 post then 1 (burned) otherwise 0 (unburned)</i>	
multi-temporal rules	4 th rule <i>If TM4 post + a TM4 post < TM4 pre then 1 (burned) otherwise 0 (unburned) a=0.10-0.25</i>	
	5 th rule <i>If TM7 post > TM7 pre + a TM7 pre then 1 (burned) otherwise 0 (unburned) a=0.10-0.25</i>	

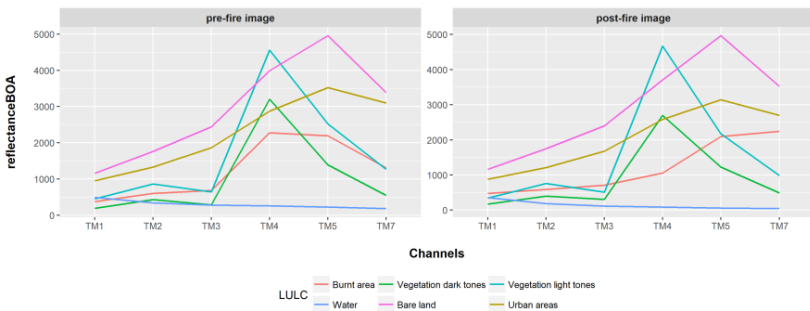
Italy - Landsat



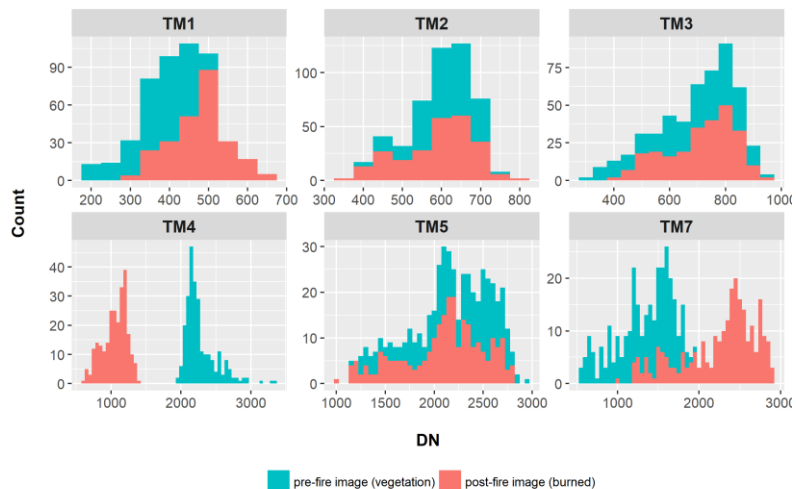
Italy - Landsat



Italy - Landsat



Italy - Landsat



Only post-fire image

1st rule

TM4 post < TM5 post

2nd rule

TM5 post < TM7 post + threshold

3rd rule

TM3 post > TM1 post

Pre- and post-fire image

4th rule

TM4 post + threshold < TM4 pre

5th rule

TM7 post > TM7 pre + threshold

Rule

Old set of rules

Expression

Application

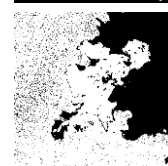
uni-temporal rules

1st rule

If Landsat TM4 post < Landsat TM5 post then 1 (burned) otherwise 0 (unburned)

2nd rule

If Landsat TM5 post < Landsat TM7 post + a Landsat TM7 post then 1 (burned) otherwise 0 (unburned) $a=0.10-0.25$

3rd rule

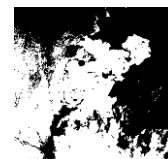
If Landsat TM3 post > Landsat TM1 post then 1 (burned) otherwise 0 (unburned)



multi-temporal rules

4th rule

If TM4 post + a TM4 post < TM4 pre then 1 (burned) otherwise 0 (unburned) $a=0.10-0.25$

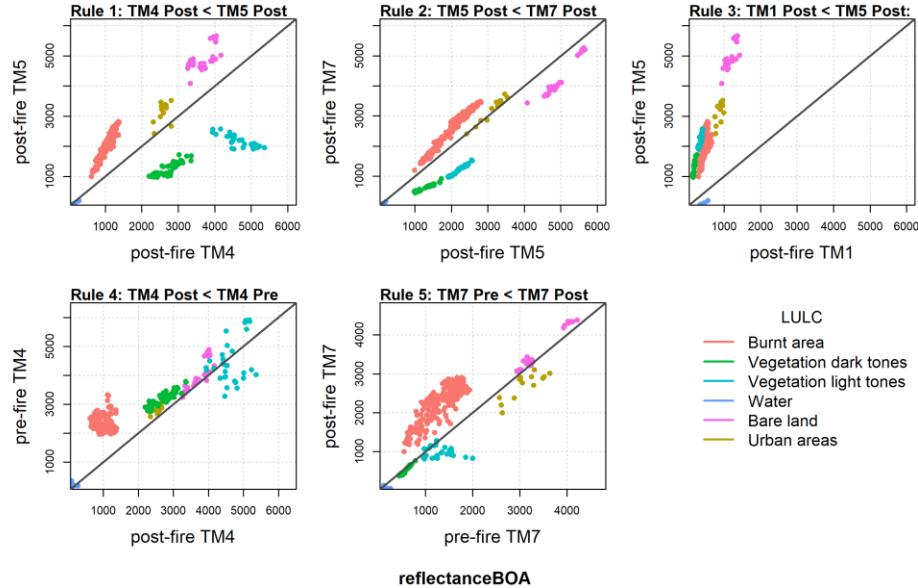
5th rule

If TM7 post > TM7 pre + a TM7 pre then 1 (burned) otherwise 0 (unburned) $a=0.10-0.25$

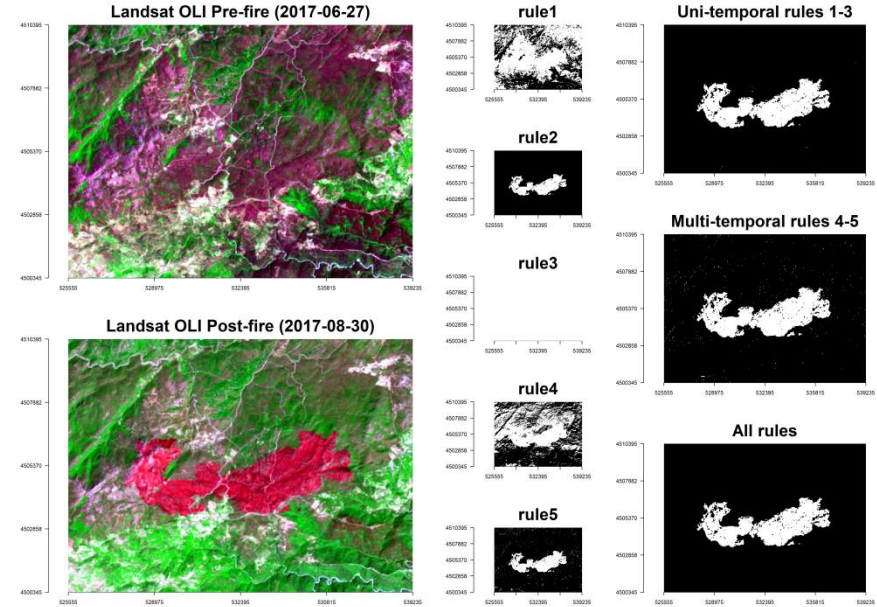


A successful example

Italy - Landsat

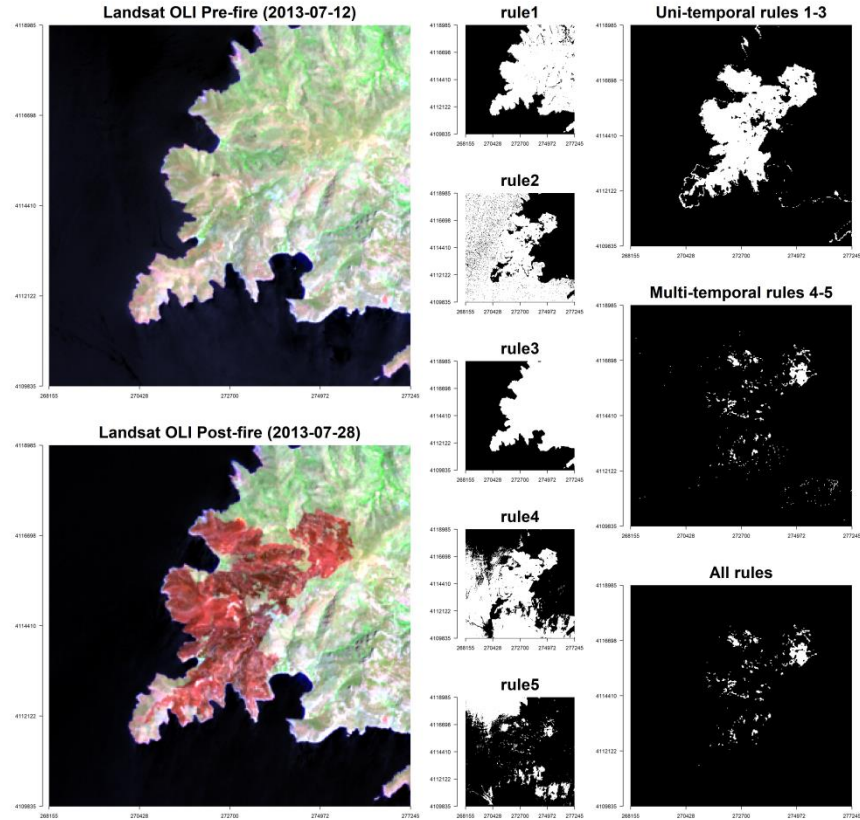


Italy - Landsat

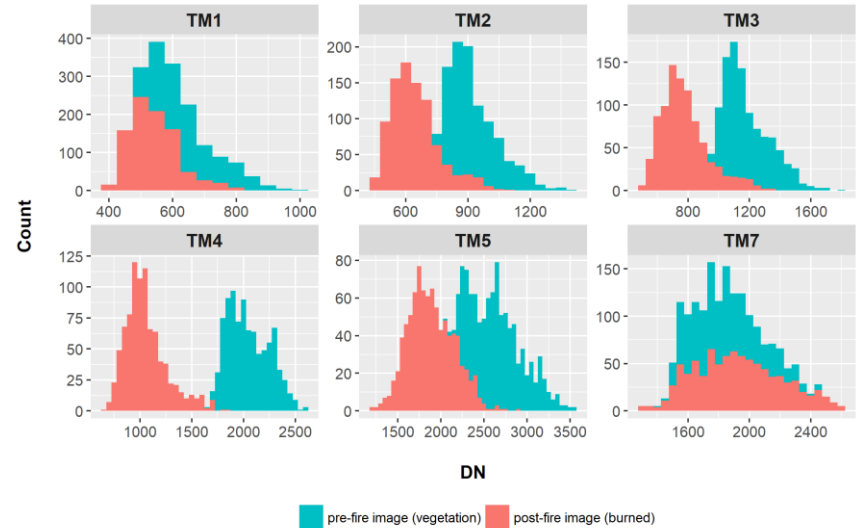


A non-successful example

Serifos - Landsat

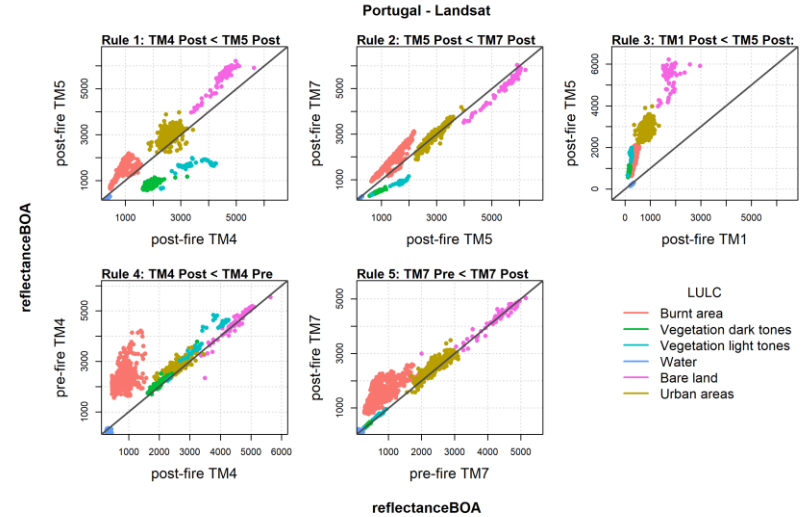
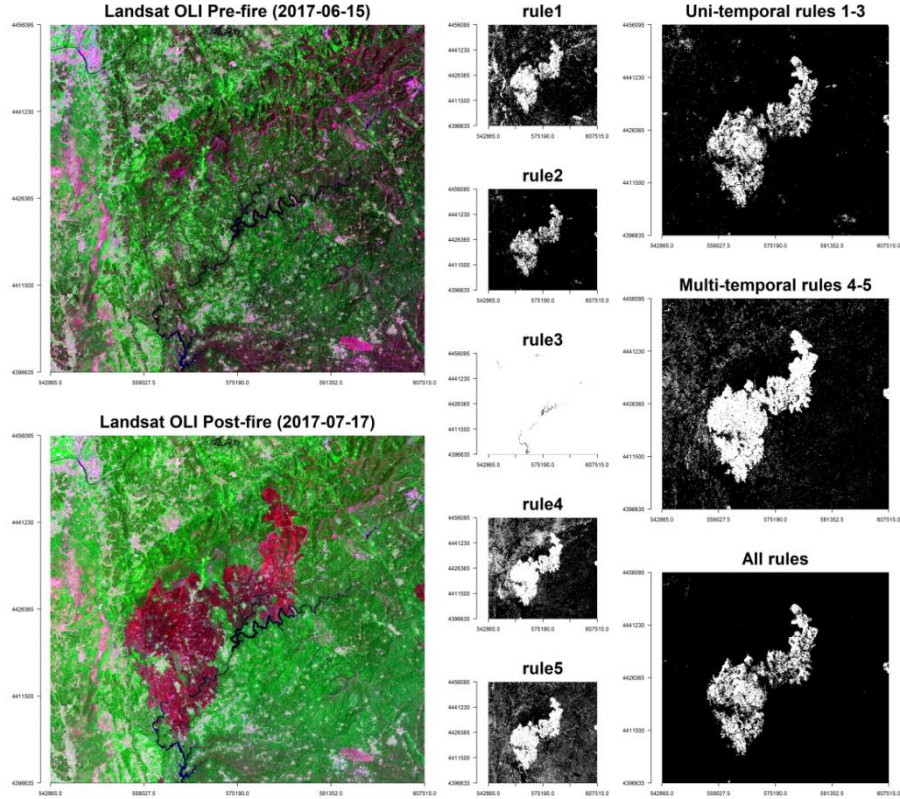


Serifos - Landsat



A non-successful example

Portugal - Landsat



Old set of rules

Only post-fire image

1st rule

TM4 post < TM5 post

2nd rule

thres=0.25

TM5 post < TM7 post + threshold

3rd rule

TM3 post > TM1 post

Pre- and post-fire image

4th rule

thres=0.10-0.25

TM4 post + threshold < TM4 pre

5th rule

thres=0.10-0.25

TM7 post > TM7 pre + threshold

New set of rules

Only post-fire image

1st rule

TM4 post < TM5 post

2nd rule

thres=0.35

TM5 post < TM7 post + threshold

3rd rule

TM5 post > TM1 post

Pre- and post-fire image

4th rule

thres=0.05

TM4 post + threshold < TM4 pre

5th rule

thres=0.05

TM7 post > TM7 pre + threshold

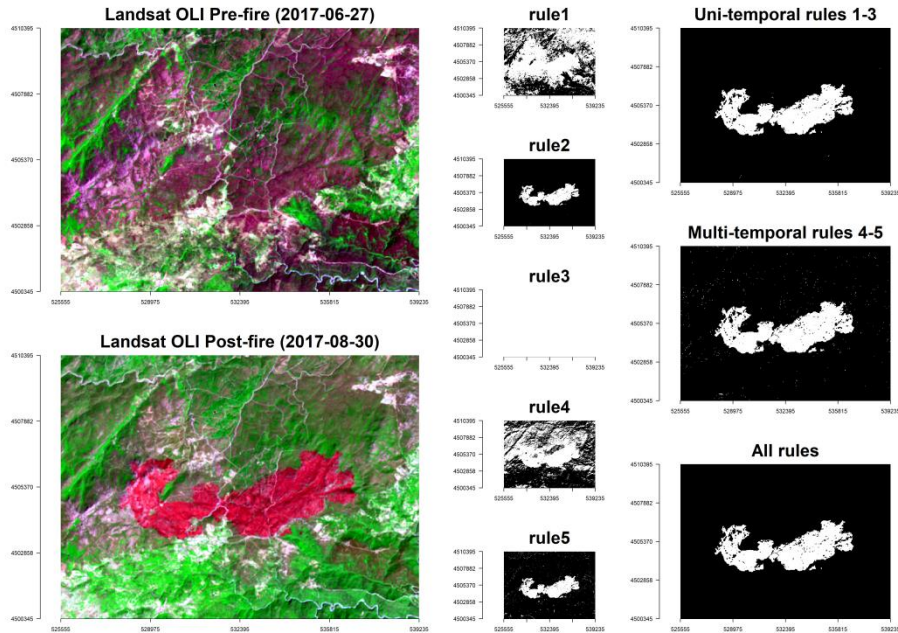
TM5 post + threshold < TM5 pre

Rule	Old set of rules		New set of rules	
	Expression	Application	Expression	Application
uni-temporal rules	1 st rule If Landsat TM4 post < Landsat TM5 post then 1 (burned) otherwise 0 (unburned)		If Landsat TM4 post < Landsat TM5 post then 1 (burned) otherwise 0 (unburned)	
	2 nd rule If Landsat TM5 post < Landsat TM7 post + a Landsat TM7 post then 1 (burned) otherwise 0 (unburned) a=0.10-0.25		If Landsat TM5 post < Landsat TM7 post + a Landsat TM7 post then 1 (burned) otherwise 0 (unburned) a=0.35	
	3 rd rule If Landsat TM3 post > Landsat TM1 post then 1 (burned) otherwise 0 (unburned)		If Landsat TM5 post > Landsat TM1 post then 1 (burned) otherwise 0 (unburned)	
multi-temporal rules	4 th rule If TM4 post + a TM4 post < TM4 pre then 1 (burned) otherwise 0 (unburned) a=0.10-0.25		If TM4 post + a TM4 post < TM4 pre then 1 (burned) otherwise 0 (unburned) a=0.2	
	5 th rule If TM7 post > TM7 pre + a TM7 pre then 1 (burned) otherwise 0 (unburned) a=0.10-0.25		If TM7 post > TM7 pre + a TM7 pre or If TM5 post + a TM5 post < TM5 pre then 1 (burned) otherwise 0 (unburned) a=0.05	
An example	Pre-fire image 	Post-fire image 	Old set of rules 	New set of rules

Applying the new set of rules to the previous examples

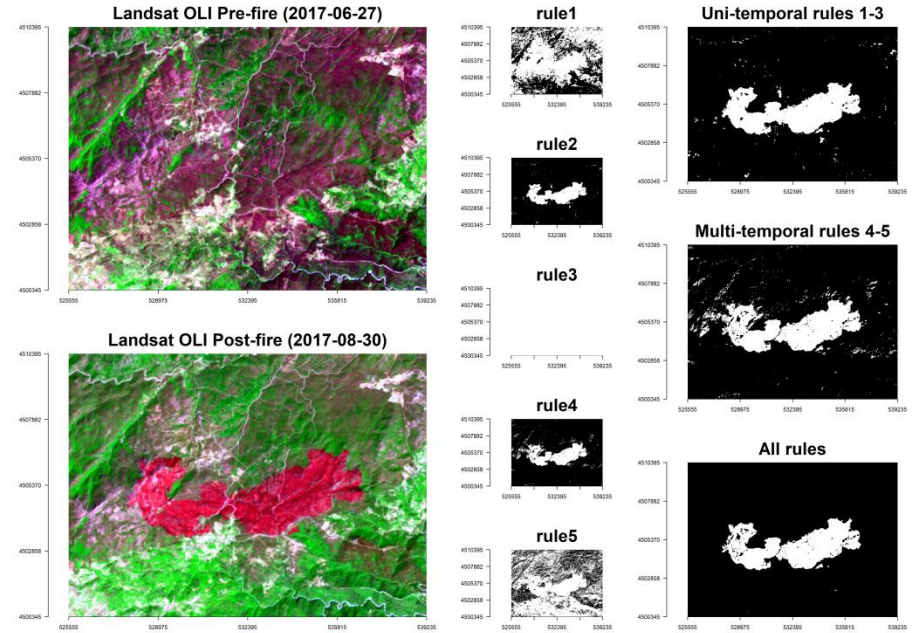
Old set of rules

Italy - Landsat



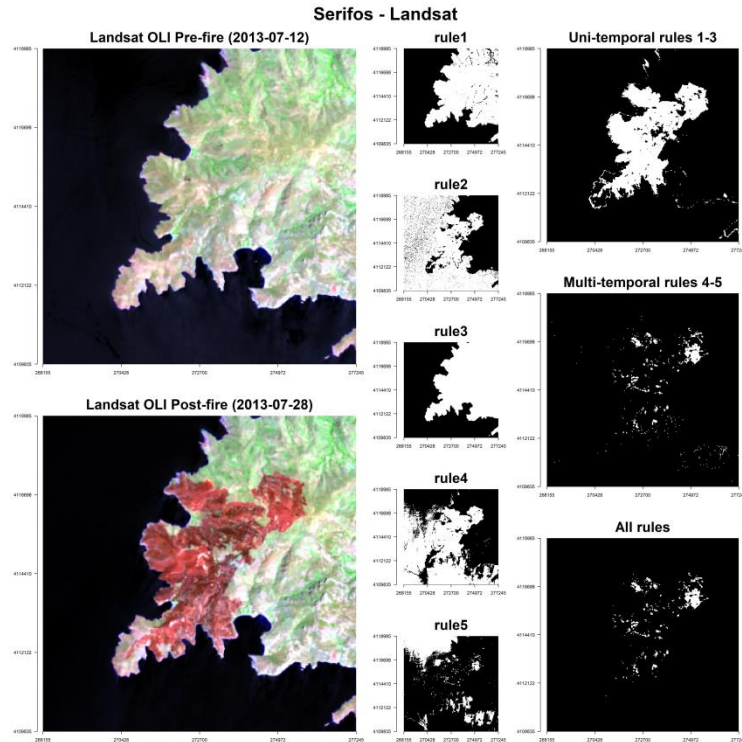
New set of rules

Italy - Landsat

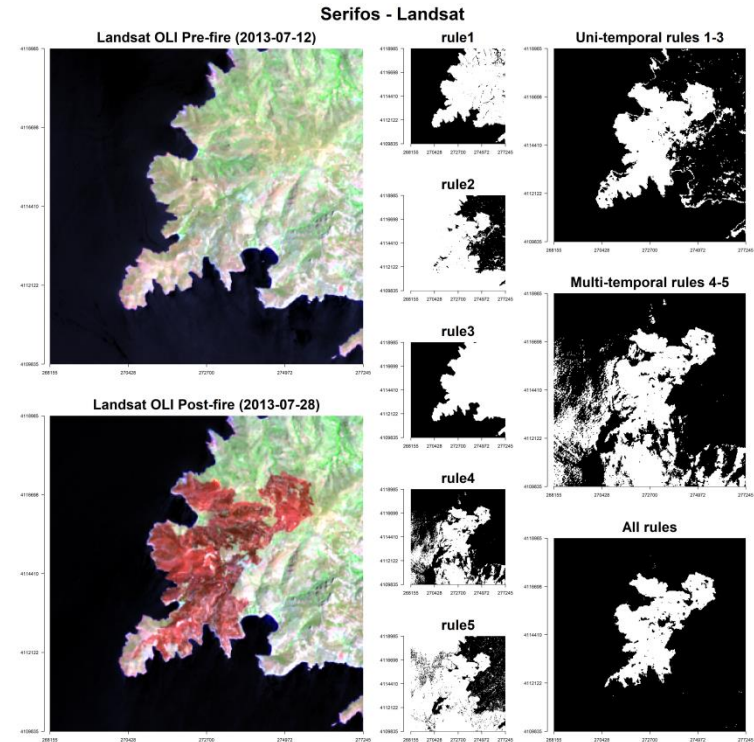


Applying the new set of rules to the previous examples

Old set of rules

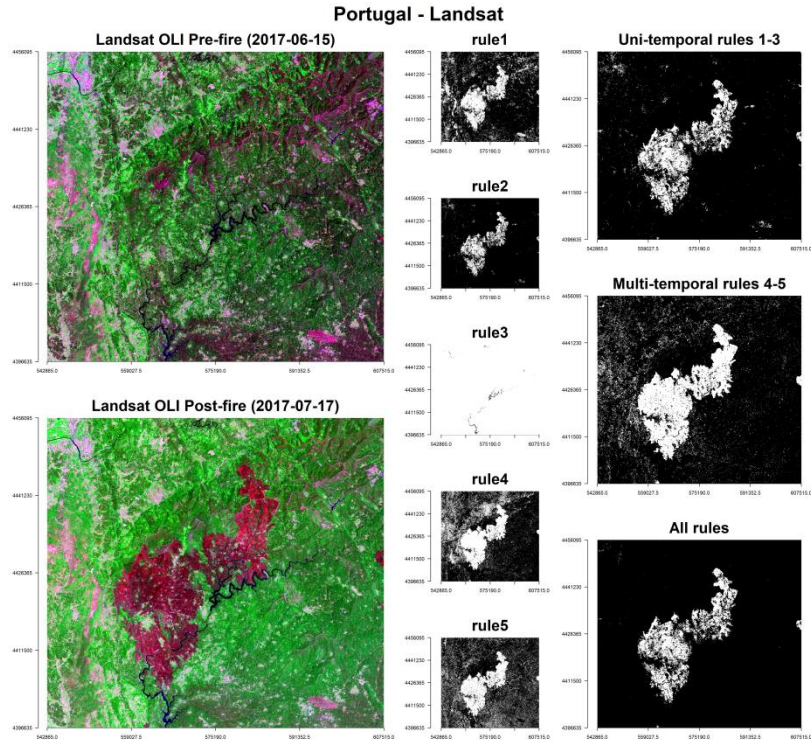


New set of rules

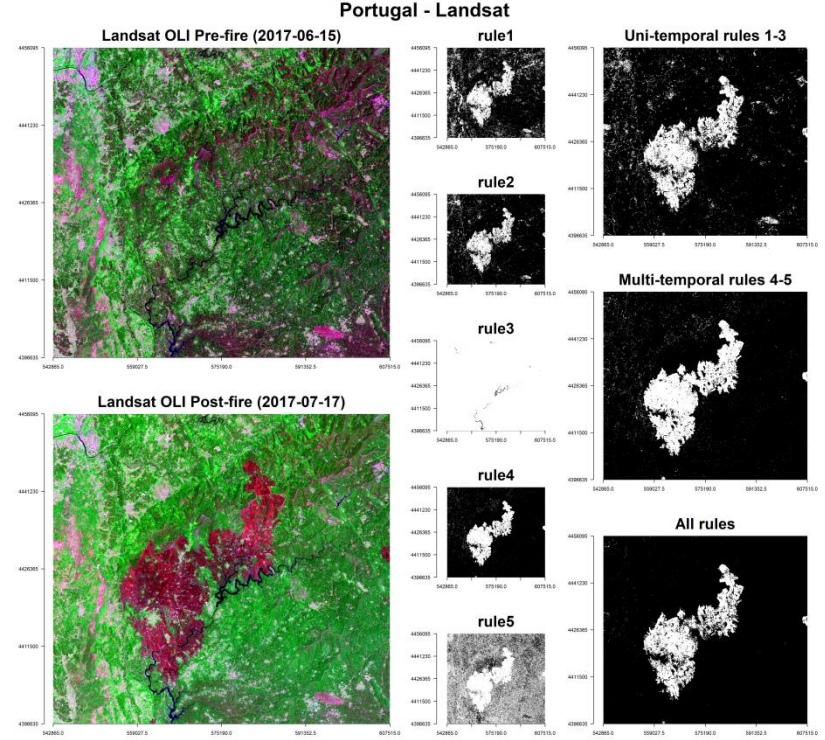


Applying the new set of rules to the previous examples

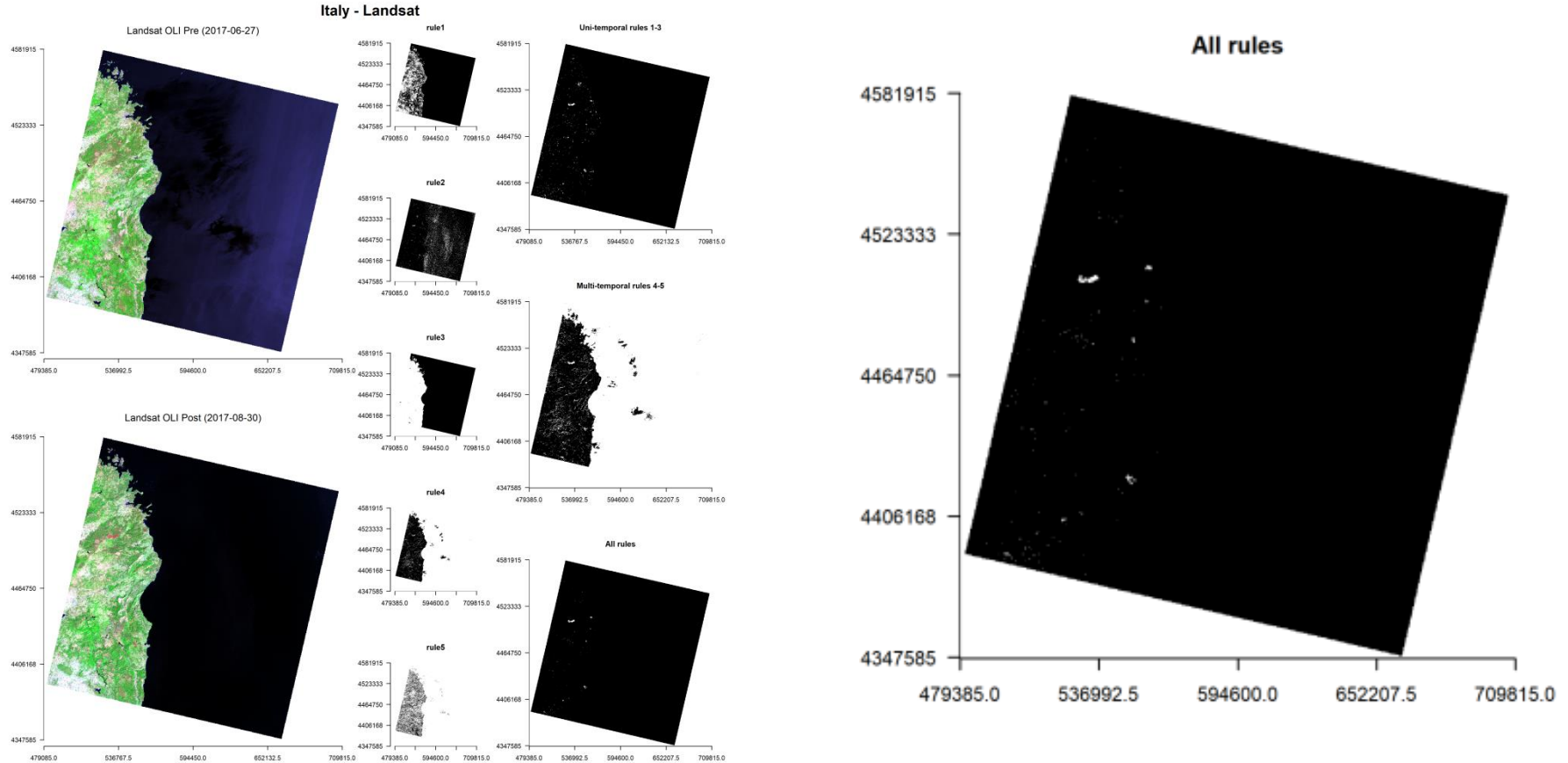
Old set of rules



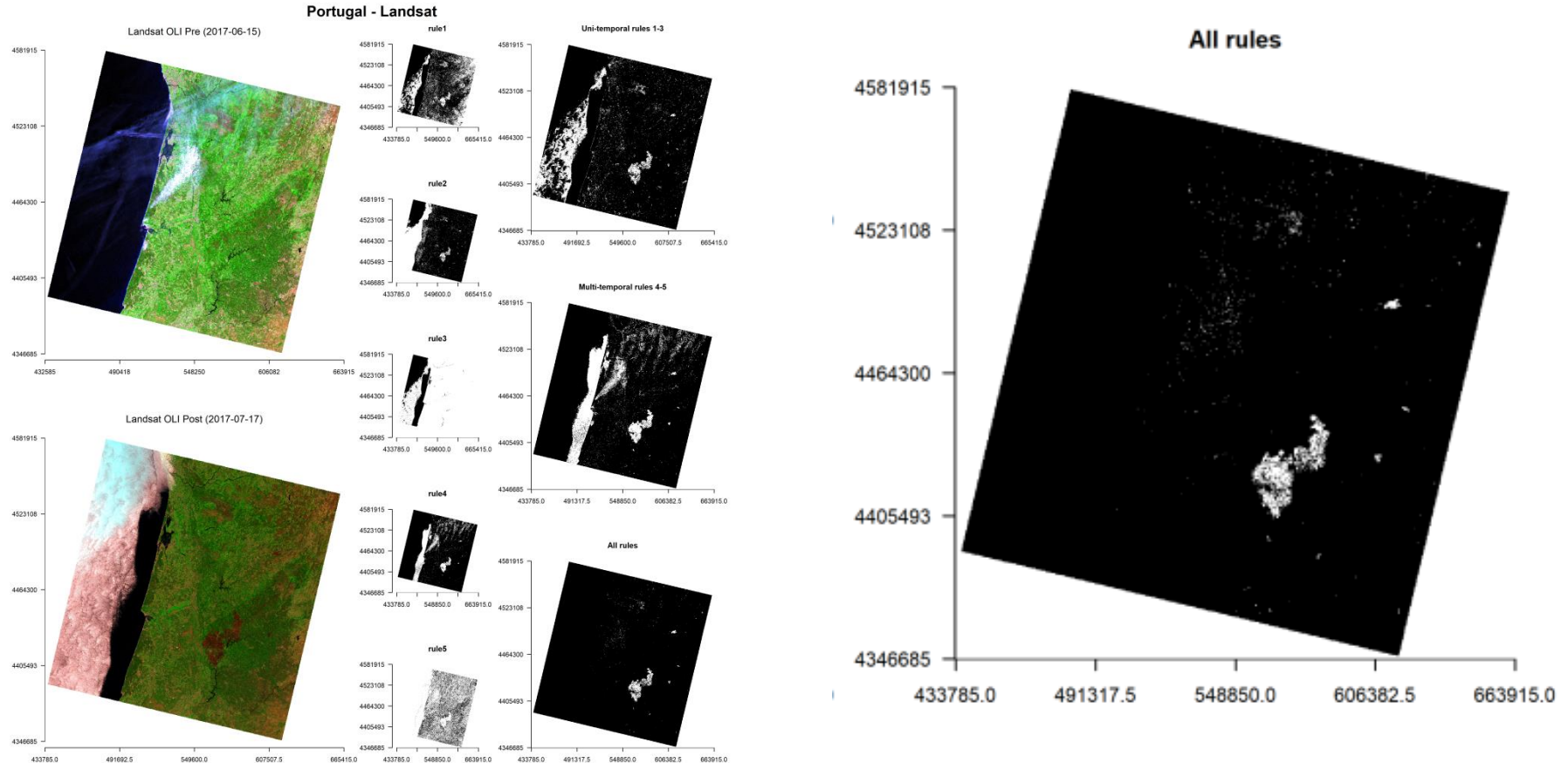
New set of rules



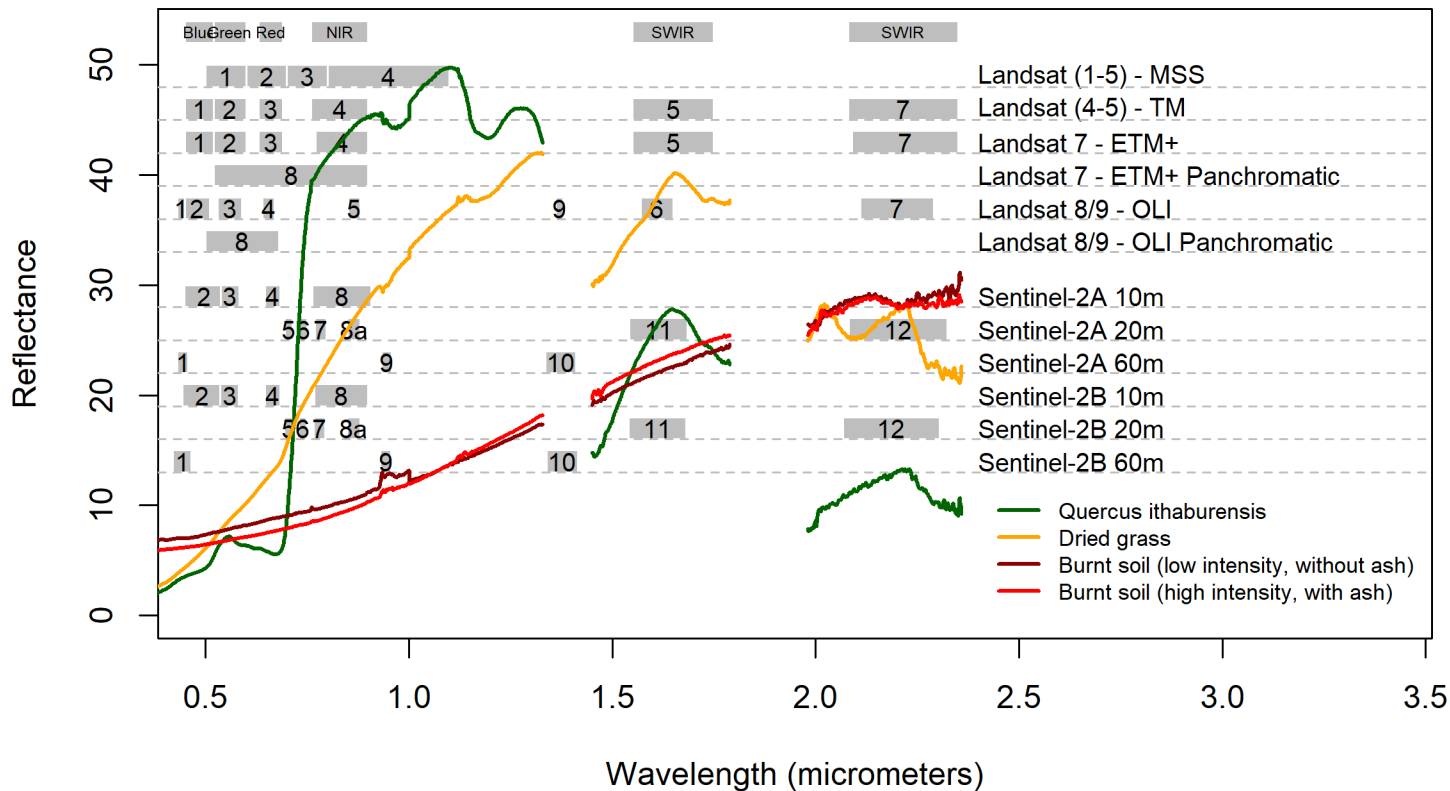
Applying the new set of rules to the whole image



Applying the new set of rules to the whole image

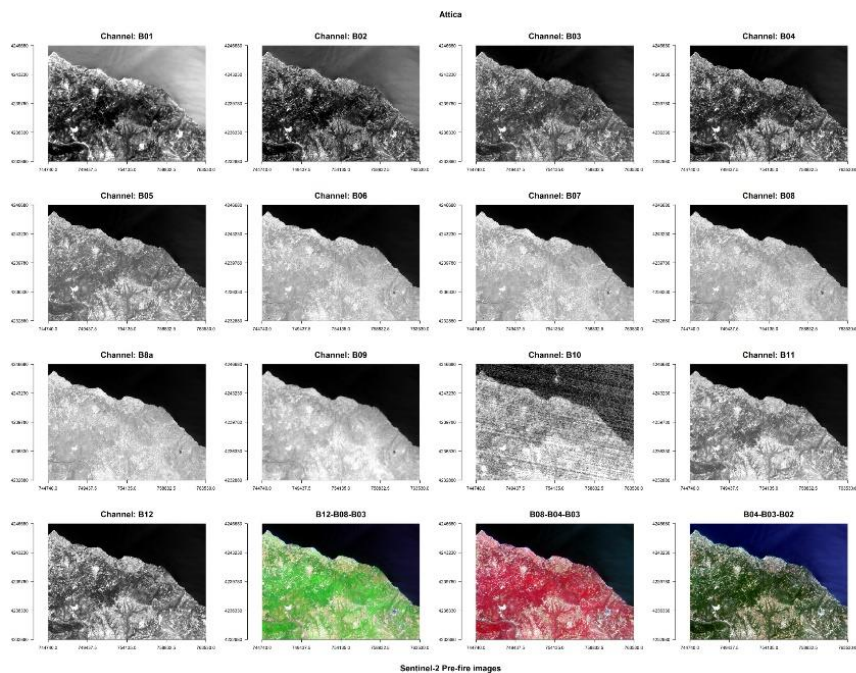


Spectral resolution of Sentinel-2 & Landsat satellites

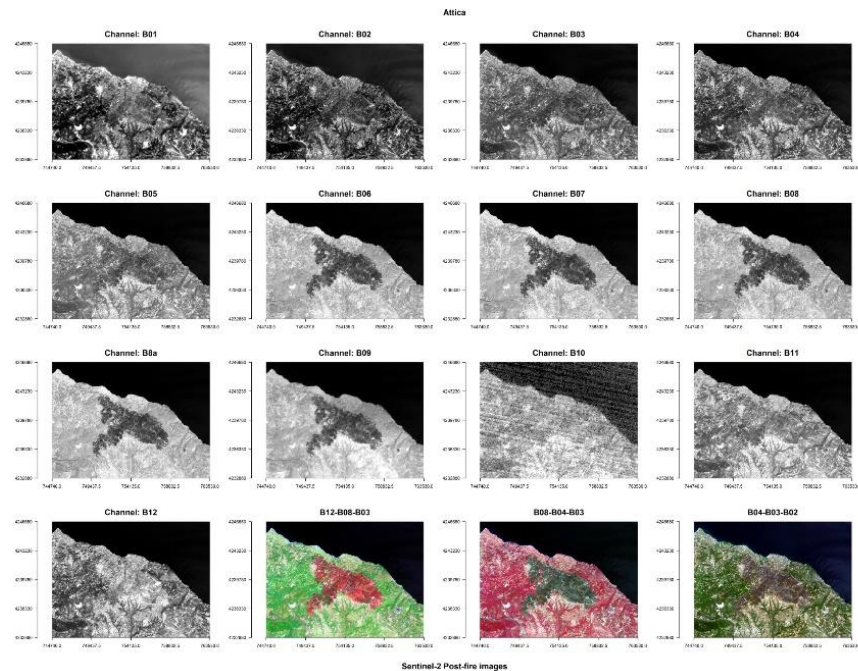


Applying the new set of rules to Sentinel-2 images

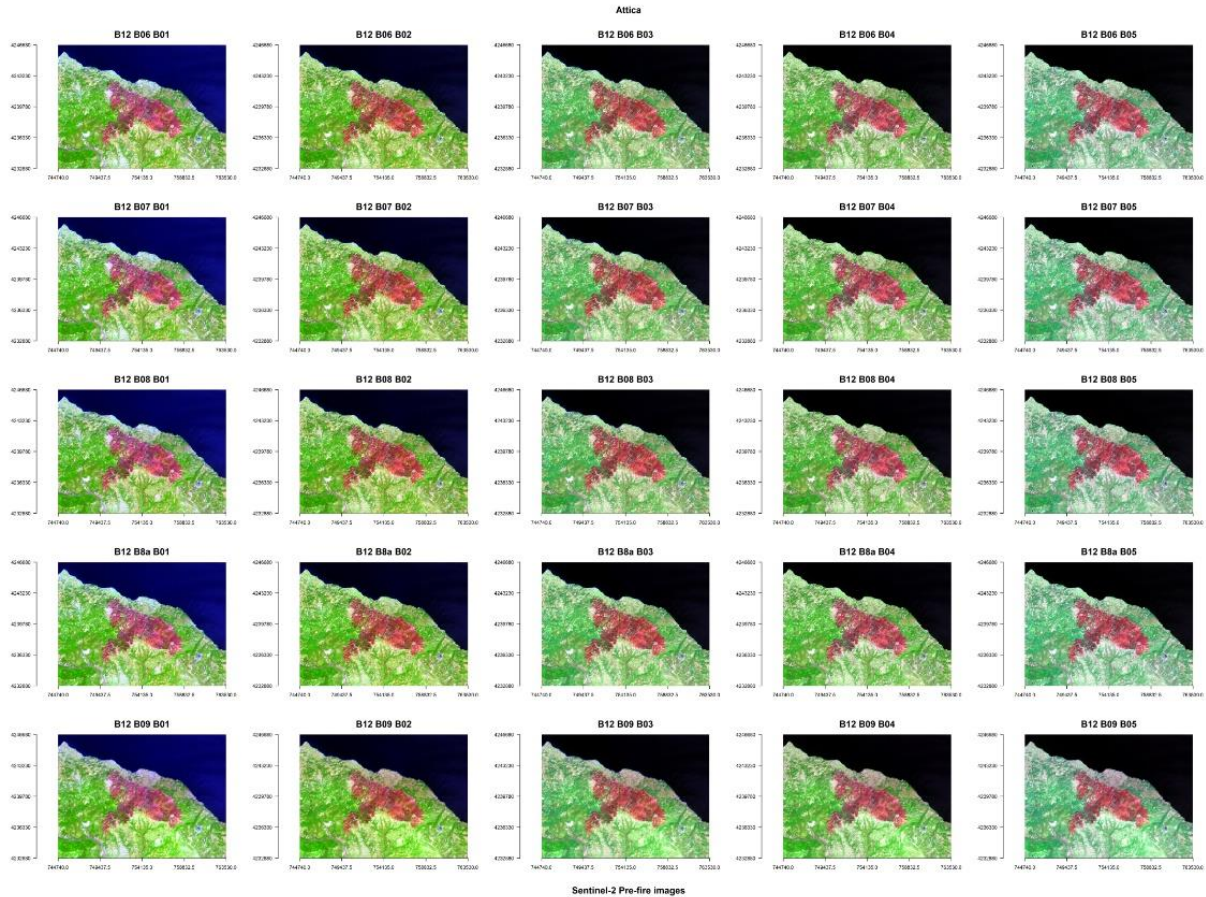
Pre-fire sentinel image



Post-fire sentinel image

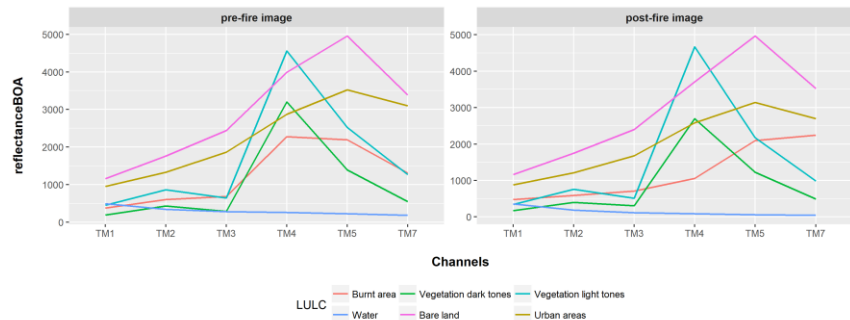


Applying the new set of rules to Sentinel-2 images

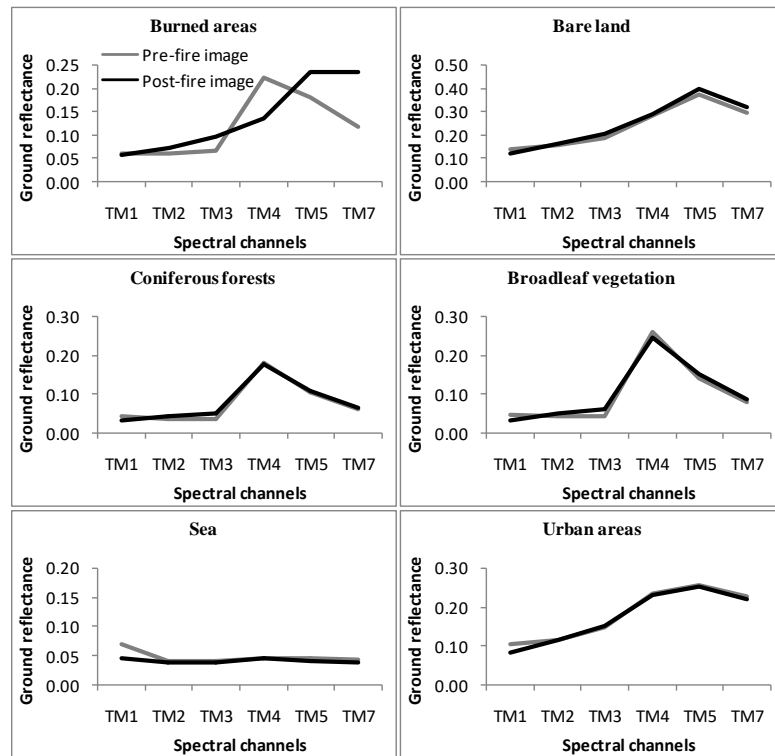
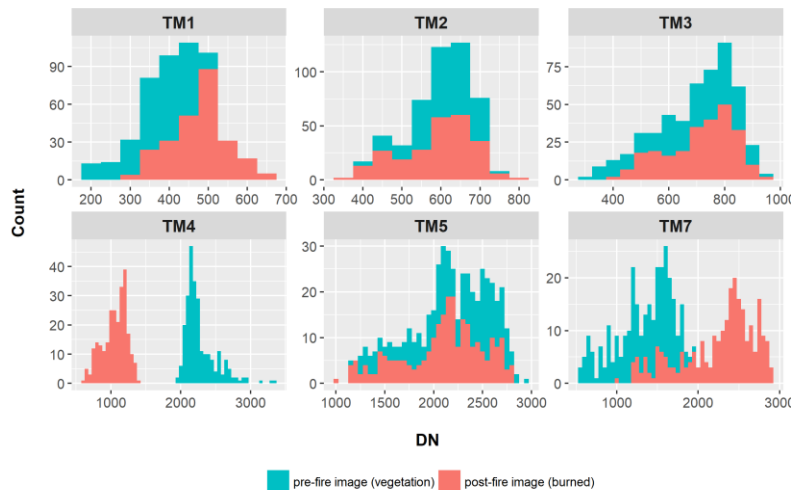


Landsat

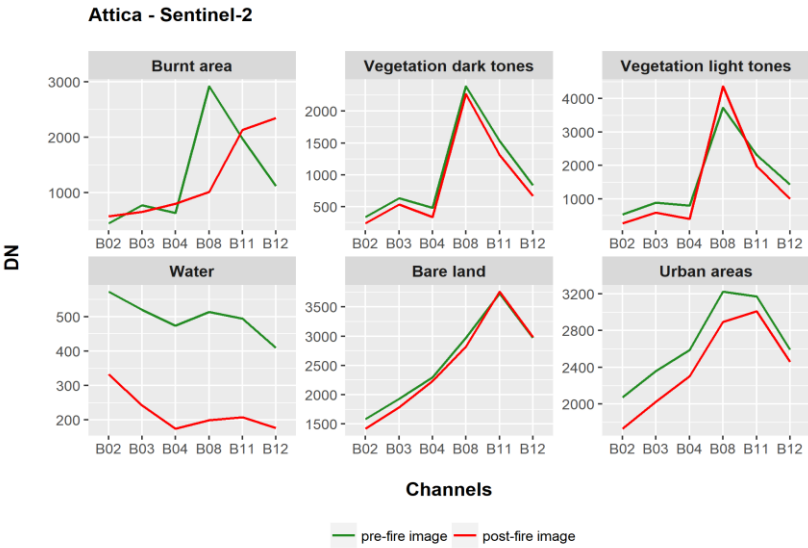
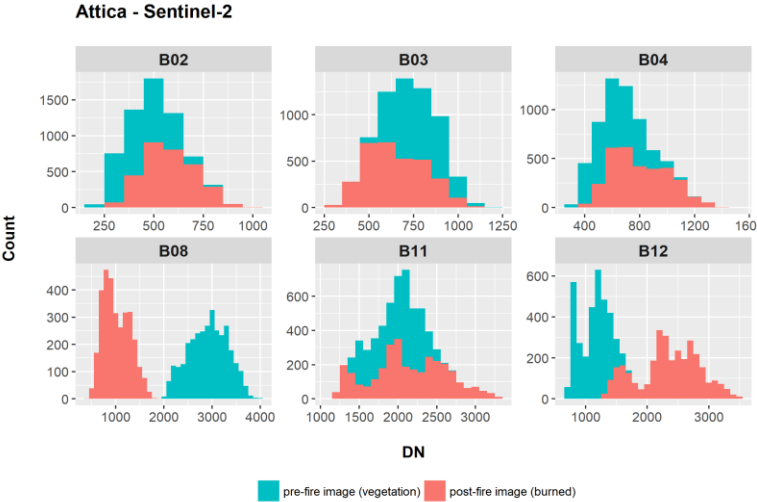
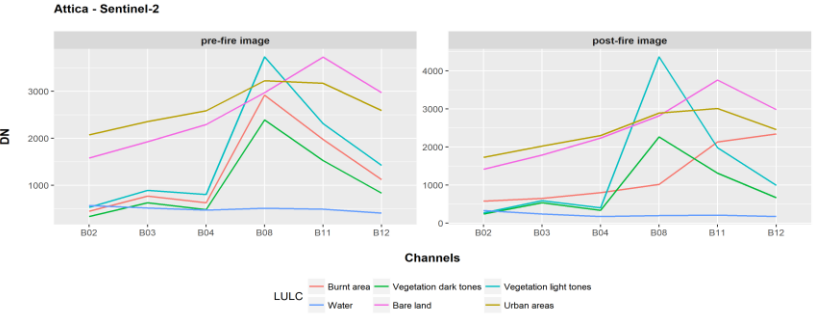
Italy - Landsat



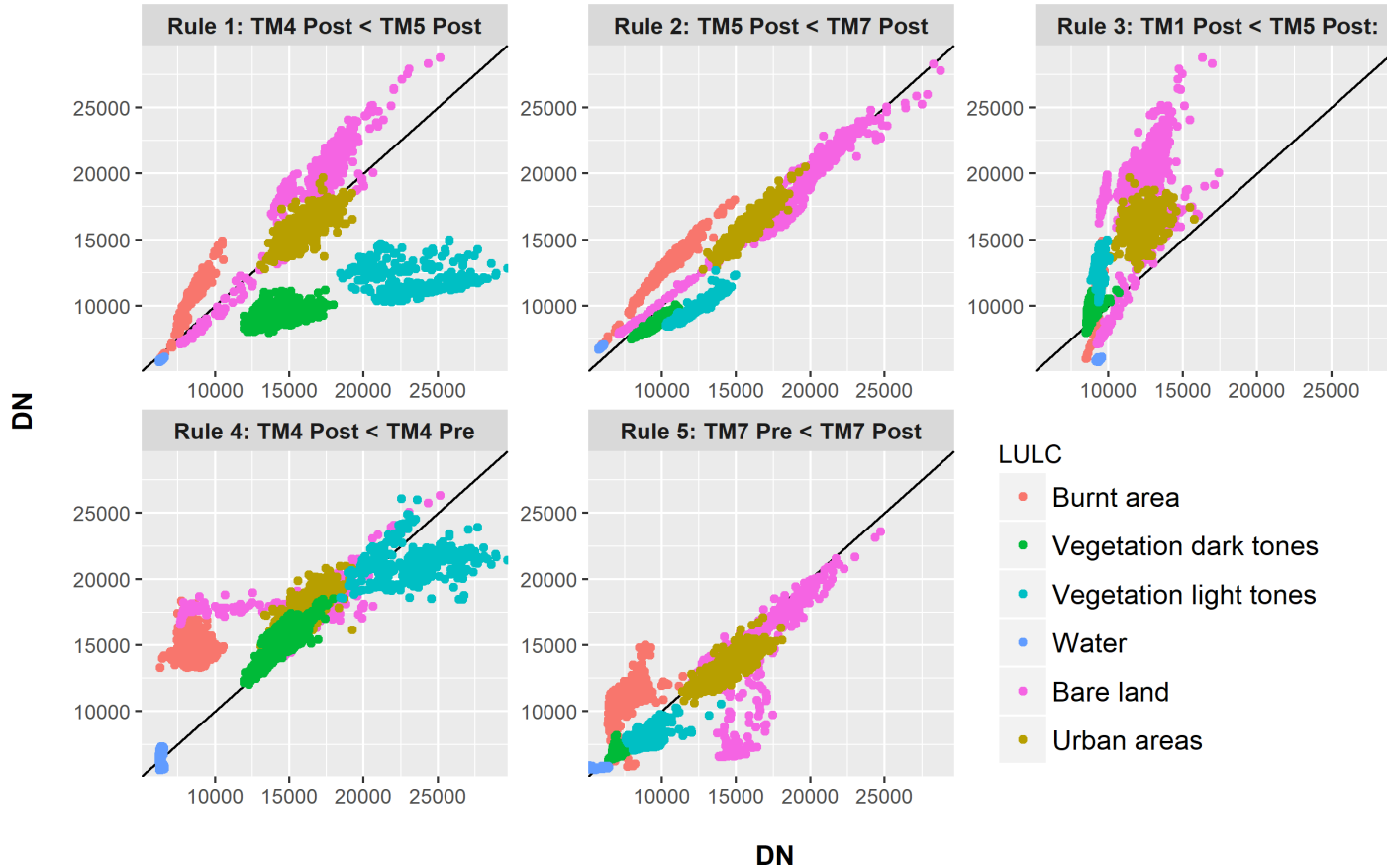
Italy - Landsat



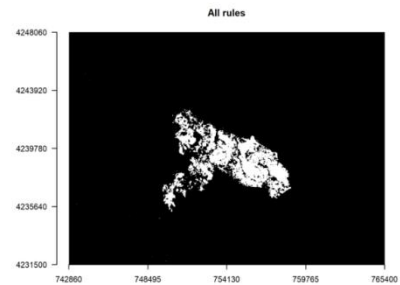
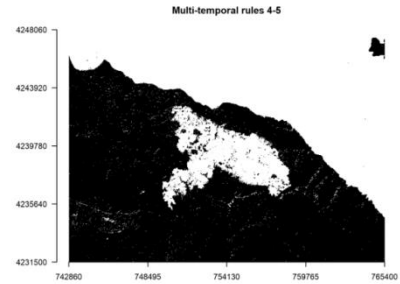
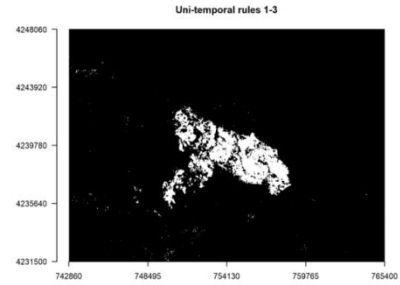
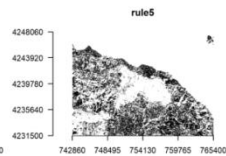
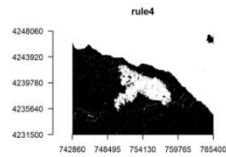
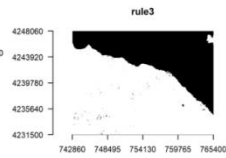
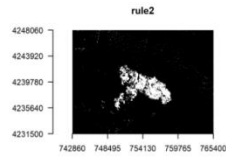
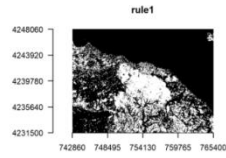
Sentinel-2



Attica - Landsat



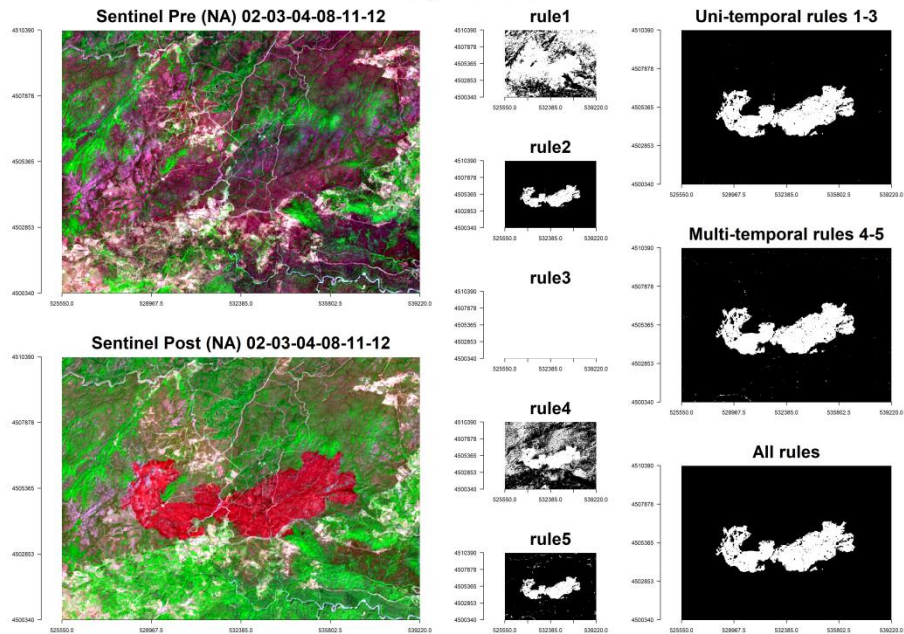
Attica - Sentinel



Applying the new set of rules to Sentinel-2 images

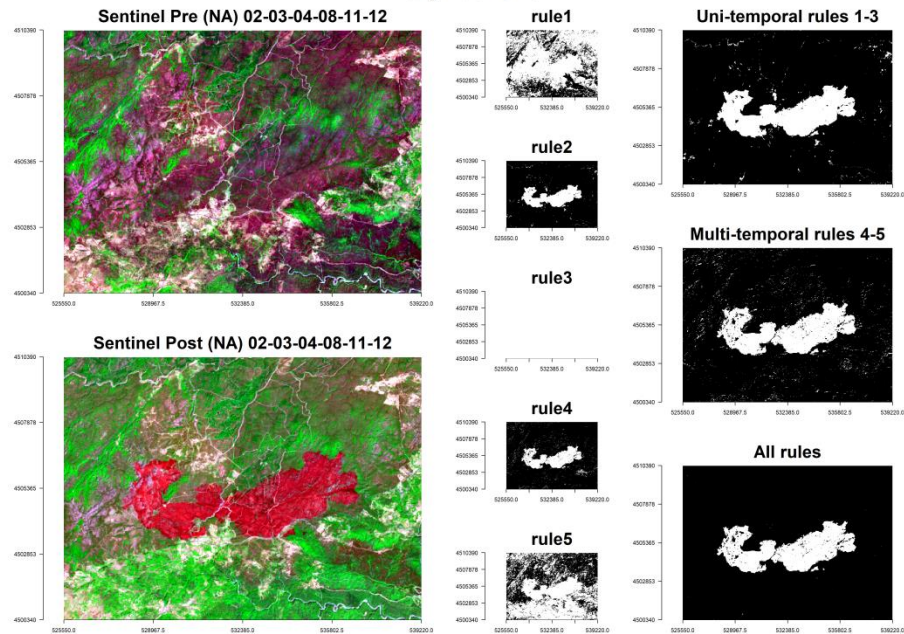
Old set of rules

Italy - Sentinel



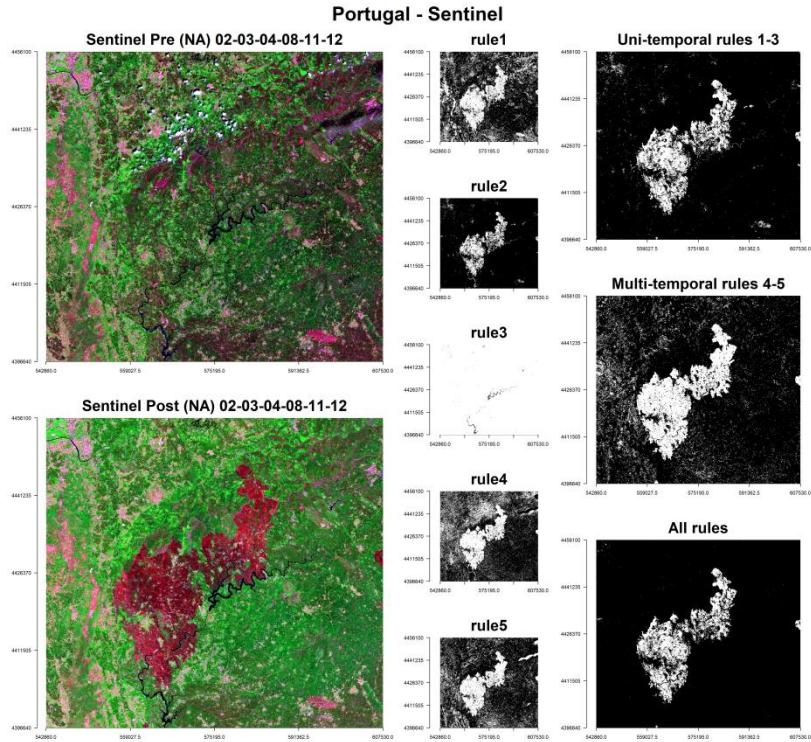
New set of rules

Italy - Sentinel

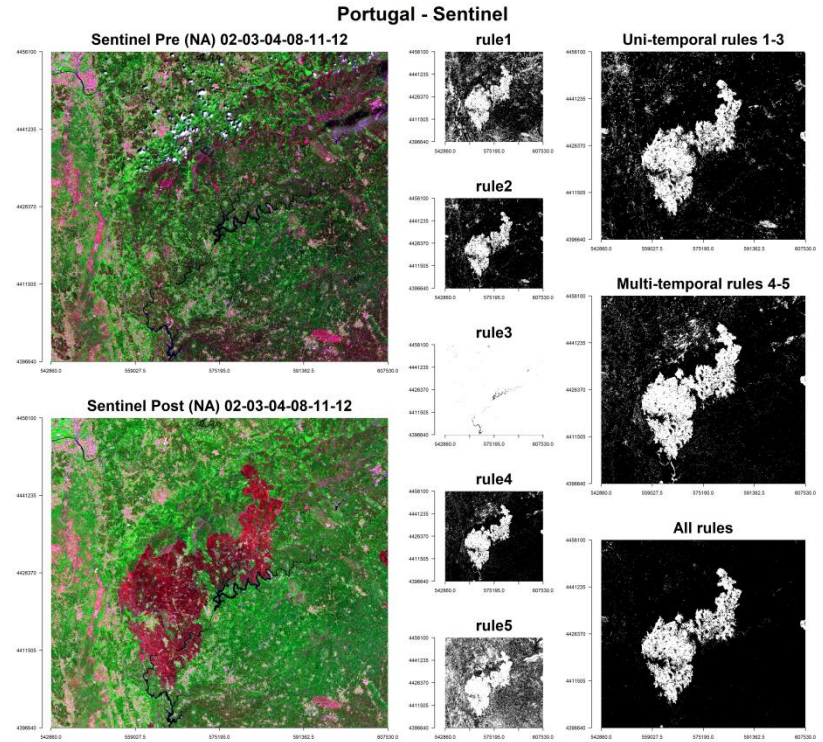


Applying the new set of rules to Sentinel-2 images

Old set of rules

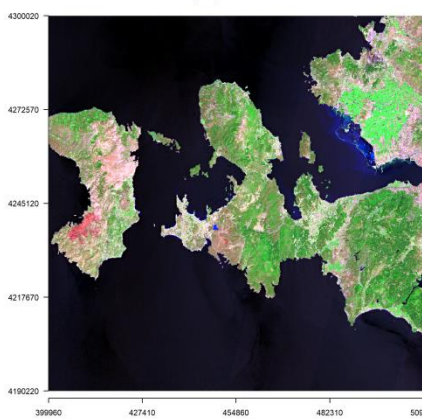


New set of rules

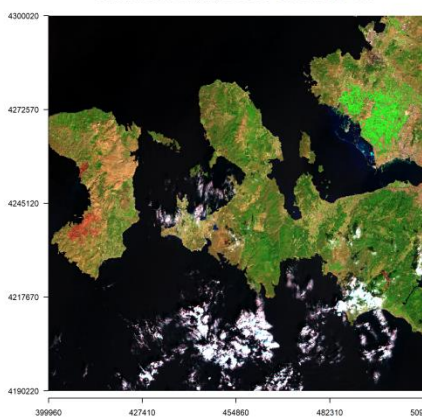


Chios - Sentinel

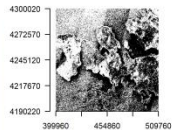
Sentinel OLI Pre (NA) B02-B03-B04-B08-B11-B12



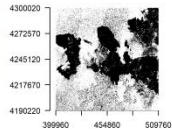
Sentinel OLI Post (NA) B02-B03-B04-B08-B11-B12



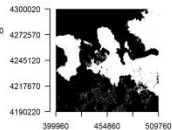
rule1



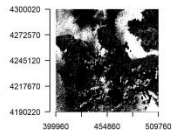
rule2



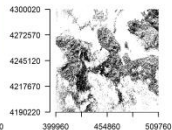
rule3



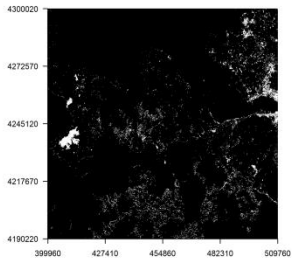
rule4



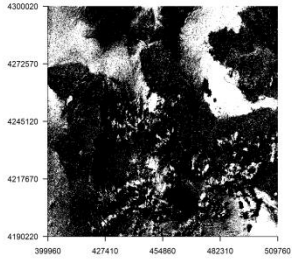
rule5



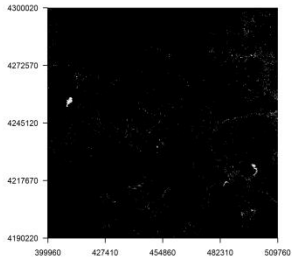
Uni-temporal rules 1-3



Multi-temporal rules 4-5

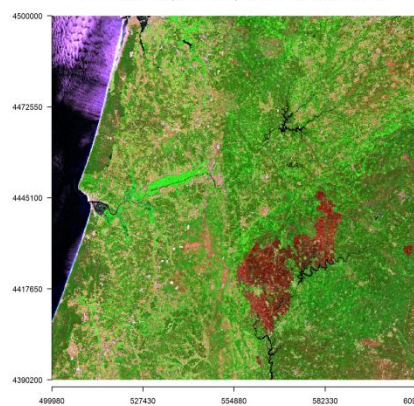


All rules

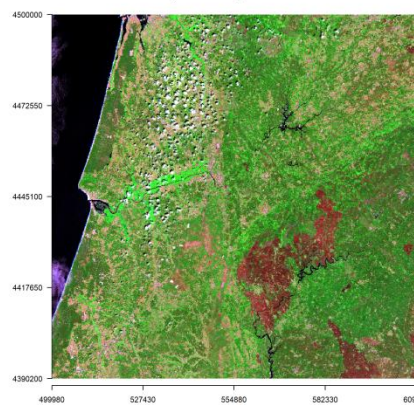


Portugal - Sentinel

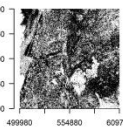
Sentinel OLI Pre (2017-07-14) B02-B03-B04-B08-B11-B12



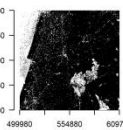
Sentinel OLI Post (2017-08-03) B02-B03-B04-B08-B11-B12



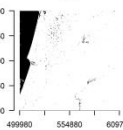
rule1



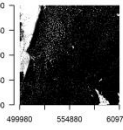
rule2



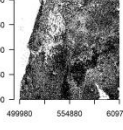
rule3



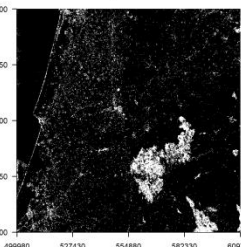
rule4



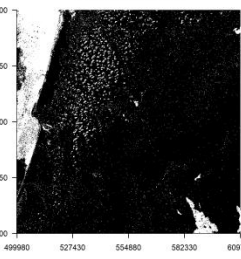
rule5



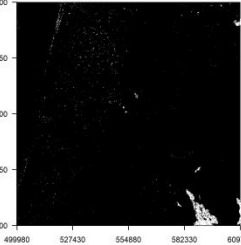
Uni-temporal rules 1-3



Multi-temporal rules 4-5



All rules



Thank you for your attention